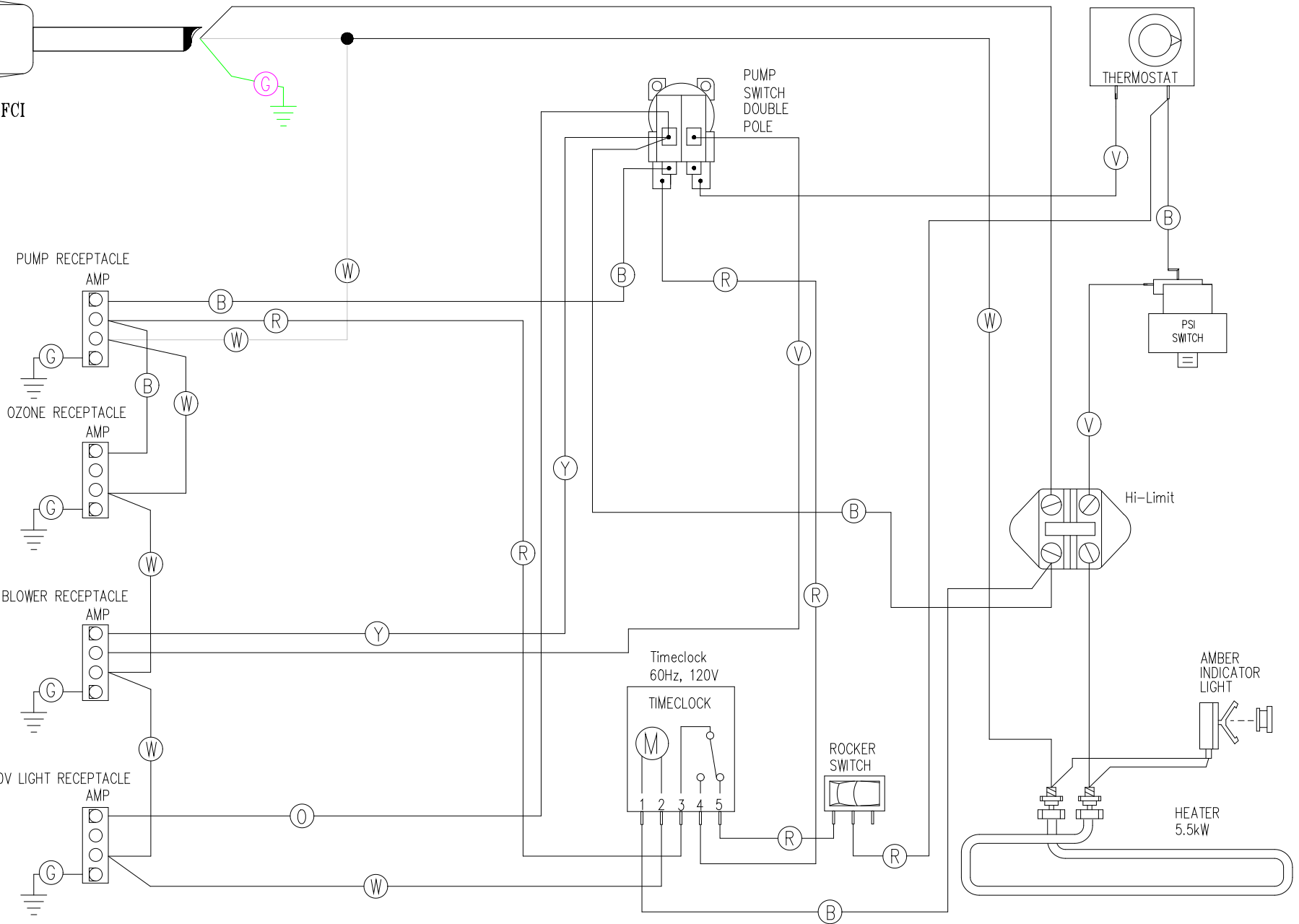


15 AMP CORDEND GFCI
30-0061A



HYDRO-QUIP
CORONA, CA (909) 273-7575

Manufacture Notes: ON RELAY INDICATES CAPACITOR.

Dwg. No.
103TG-BDEKQ

Drawn
BH

Rev
3

Wire Color Code

NOTE: Jumper Plug is used when Blower is NOT installed. Failure to do so will cause the equipment to malfunction.

NOTE: Install only 120v switched Air Blower when Jumper Plug is NOT installed.

Date
05.07.03

Diagram No. **938**

B - Black	G - Green
Br - Brown	Bl - Blue
R - Red	V - Violet
O - Orange	W - White
Y - Yellow	